



# CX series



# Best value entry level desktop printer



Best Label-saving Protocol!



## Before



Last generation label printer needs tedious, costly and time consuming setting procedures.

## After

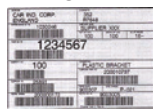


Using smarter new generation desktop printer to save time and money.

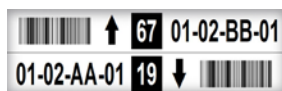
## Application



### Logistics



### Warehouse



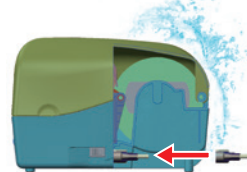
### Manufacturing



### Service Bureau



## Feature-rich to make daily work simple and easy



### Shell Suit design

Interface roof feature can avoid interface from water spill damage and keep machine close to wall, reducing operating space.



### Easy to load media

Large loading space for easy installation of the media and ribbon.



### Durable life

As the turtle spirit, integrated structure makes CX series solid and robust.



### Performance enhance

CX series is faster 20% than old CP series, expanded with SDRAM and Flash ROM for more fonts, forms and graphics support.

Print Specifications	CX-2040	CX-2140	CX-3040	CX-3140
Printing Method	Direct Thermal & Thermal Transfer			
Printing Resolution	203 dpi (8 dots/mm)		300 dpi (12 dots/mm)	
Printing Speed	Max. 6 ips		Max. 4 ips	
Printing Length	Max. 100"(2540 mm)		Max. 50"(1270 mm)	
Printing Width	Max. 4.25"(108 mm)		Max. 4.16"(105.7 mm)	
Memory	32 MB SDRAM, 16 MB Flash ROM			
CPU Type	32-bit RISC microprocessor			
Consumables Specifications				
Sensors	Reflective sensor x 1 (movable) & Transmissive sensor x 1 (Center fixed)			
Media Type	Roll-feed, die-cut, continuous, fan-fold, black mark, tags, ticket in thermal paper or plain paper			
Media	Max. width: 4.65" (118mm). Min. width: 0.8" (20mm). Thickness: 0.0024"~0.008" (0.06mm~0.2mm) 5"(127mm) OD on a 1" (25.4mm) ID core			
Ribbon	Ribbon width: 1"~4.33"(25.4mm~110mm), Ribbon length: Max. 300m. Core size ID: 1"(25.4mm), optional: 0.5"(12.7mm), Core width: 2.6"(67mm) Wax, Wax/Resin, Resin (Ribbon wound ink-side out or ink-side in: auto-detect)			
Fonts & Symbolologies				
Fonts	Internal character sets standard 5 alpha-numeric fonts from 0.049"H ~ 0.23" H (1.25mm ~ 6.0mm) Internal fonts are expandable up to 24x24 4 direction 0 ~ 270 rotation Soft fonts are downloadable Ability to print any Windows True Type font easily. Support scalable font			
1D Barcodes	UPC-A, UPC-E, JAN/EAN, CODE39, CODE93, CODE128, GS1-128 (UCC/EAN128), CODABAR (NW-7), ITF, Industrial 2of5, MSI, UPCadd-on code, POSTNET, GS1 DataBar Omnidirectional, GS1 DataBar Truncated, GS1 DataBar Stacked, GS1 DataBar Stacked Omnidirectional, GS1DataBar Limited, GS1 DataBar Expanded, GS1DataBar Expanded Stacked			
2D Barcodes	QR Code, PDF417 (including MicroPDF), DataMatrix (ECC200), GS1 DataMatrix, MaxiCode			
Graphics	PPLA: PCX, BMP, IMG, HEX, GDI PPLB: PCX, BMP, Binary raster, GDI PPLZ: GRF, Hex, GDI			
Emulation	PPLA, PPLB, PPLZ			
Interface Characteristics and Integration				
Operation Interface	LED Indicator x 2, Button(Feed) x 1			
Communication Interface	USB device	Ethernet, USB device, RS-232, USB host	USB device	Ethernet, USB device, RS-232, USB host
Drivers	Windows Driver for Windows Vista/Win7/Win8/Win10, LINUX Driver, macOS Driver, Raspberry Pi Driver			
Software	BarTender, Printer Tool			
Database Link	Argobar Pro support ODBC Database Connection: Excel, CSV, MS Access, MS SQL, Oracle MySQL, dBASE (*.dbf)			
Operating & Environment Characteristics				
Power Source	Universal Switching Power supply. AC input voltage: 100~240V, 50~60Hz. DC Output: 24V, 2.4A			
Operation Environment	Operation Temperature: 40°F~100°F (4°C~38°C), 10% ~ 90% non-condensing, Storage Temperature: -4°F~122°F (-20°C~50°C)			
Agency Listing	CE, FCC, cULus, RoHS, BIS, BSMI, KC			
Physical Characteristics				
Printer Dimensions	W 226mm x H 188mm x D 276mm			
Printer Weight	4.6 lbs (2.1 kg)			

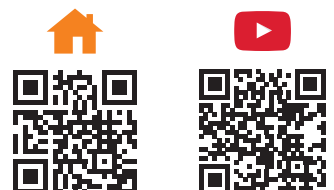
\*Argox reserves the right to enhance and modify the specification without prior notice. Please check Argox sales representative for most updated specifications.

### Optional Items



Guillotine cutter   Rotary cutter   Peeler   External media stand

Consult your local Argox business partners for location and contacts.



### Argox Information Co., Ltd.

7F., No.126, Ln.235, Baoqiao Rd., Xindian Dist., New Taipei City 231, Taiwan (R.O.C.)  
Tel: +886-2-8912-1121 Fax: +886-2-8912-1124 <https://www.argoxt.com> <https://www.youtube.com/user/argoxtmkt> email: [service@argoxt.com](mailto:service@argoxt.com)  
Copyright © 2020. Argox Information Co., Ltd. All Rights Reserved.